

Jagadguru Sri Shivarathreeshwara University, Mysore



# **JSS MEDICAL COLLEGE MYSURU**

**FEEDBACK ANALYSIS**

**2012-13 to 2016-17**

# **1. Year 2012- 13**

## **Index**

<b>1.1</b>	<b>Student feedback on teachers</b>
<b>1.2</b>	<b>Graduating students feedback</b>
<b>1.3</b>	<b>Alumni feedback</b>
<b>1.4</b>	<b>Teachers feedback on curriculum</b>
<b>1.5</b>	<b>Parent's feedback</b>
<b>1.6</b>	<b>Employer feedback</b>

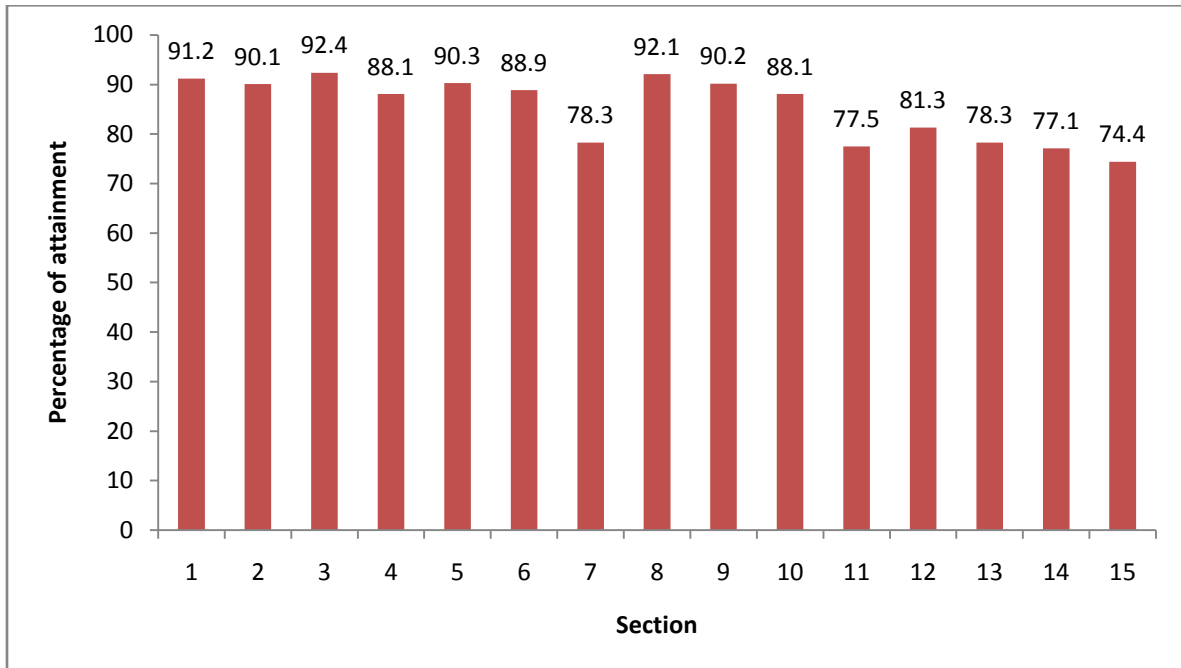
**Table 1.1 Student feedback on teachers**

<b>SL No</b>	<b>Department</b>	<b>Average Score</b>
1.	Anatomy	4.3
2.	Physiology	4.2
3.	Biochemistry	4.7
4.	Pathology	4.1
5.	Microbiology	4
6.	Pharmacology	4.1
7.	Forensic Medicine	4.7
8.	Community Medicine	4.2
9.	ENT	4.1
10.	Ophthalmology	3.9
11.	General Medicine	4.5
12.	General Surgery	4
13.	Pediatrics	4.4
14.	OBG	4.1
15.	Pulmonology	3.5
16.	Orthopedics	4
17.	Psychiatry	3.9
18.	Anesthesia	3.7
19.	Radio-diagnosis	3.6
20.	Dermatology	4.1

## 1.2 Graduating student Feedback N =66

Section	Criteria	Score	% of attainment
1	Curriculum of the course was well organized	4.4	91.2
2	Learning objectives of the course were explained to you at the beginning of the course	4.2	90.1
3	Teaching learning activities were sufficiently planned and executed well	4.5	92.4
4	Learning resources (clinical materials, books, journals, E- materials) were sufficient at Department level	3.9	88.1
5	College library was a good learning centre	4.2	90.3
6	Regular assessments were conducted during the course (Theory, practical, clinical, seminar, project work)	4.1	88.9
7	Adequate support was provided to present your work in conferences, seminars etc.	3.2	78.3
8	Examinations conducted are meticulous and transparent	4.4	92.1
9	Institution provided adequate support for my career advancement in future	4.1	90.2
10	There was adequate opportunity to seek feedback from seniors faculty	4.2	88.1
11	Hostel/accommodation facilities were satisfactory	3.5	77.5
12	Sports facilities for adequate	3.7	81.3
13	There were enough opportunities to showcase your talent in cultural events	3.8	78.3
14	There was grievance readdressal mechanism to address your concerns	3.8	77.1
15	The institution has brought in comprehensive improvement in you over the years.	3.8	74.4

**Graph – Graduating student feedback**

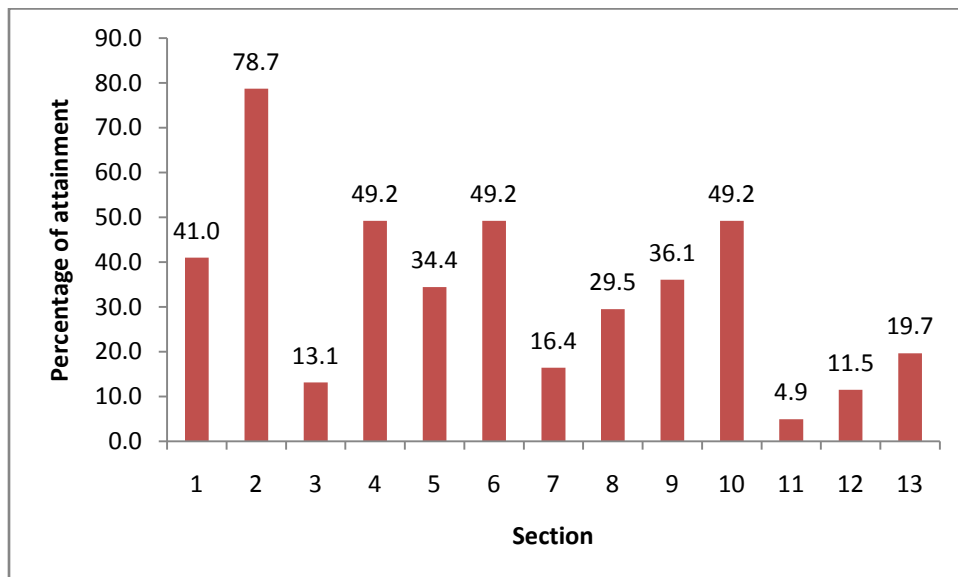


## 1.3 Alumni feedback

What are the things that you would appreciate most about this institute? N = 61

Section	Criteria	Number	Percentage
1.	Infrastructure	25	41.0
2.	Teaching Faculty	48	78.7
3.	Hostel Facilities	8	13.1
4.	Clinical Material	30	49.2
5.	Laboratories	21	34.4
6.	Teaching Learning Process	30	49.2
7.	Indoor & Outdoor Sports Facilities	10	16.4
8.	Cultural Activities	18	29.5
9.	Learning and Library Resources	22	36.1
10.	Greenery in Campus	30	49.2
11.	Communication	3	4.9
12.	Transport Facility	7	11.5
13.	Security	12	19.7

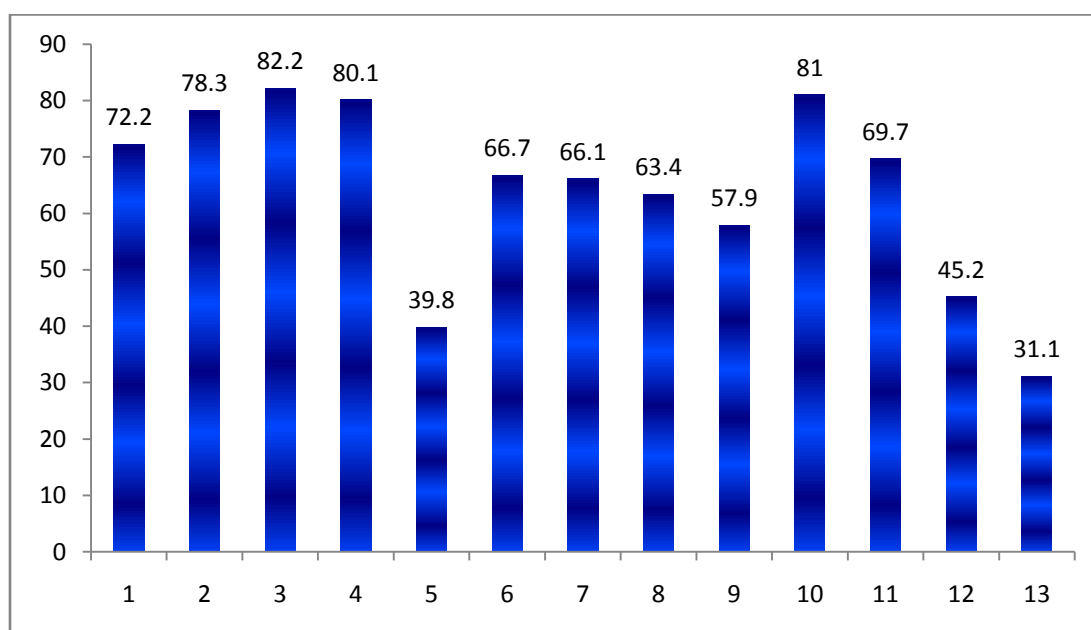
Graph – Alumni feedback



## 1.4 Teacher's feedback on Curriculum N= 102

Section	Content	Percentage attainment
1.	The syllabus of the subject is adequate	72.2
2.	The syllabus of your subject meets the learning objectives	78.3
3.	Number of hours allotted to lecture class is adequate	82.2
4.	Number of hours allotted to practical/clinical classes are adequate	80.1
5.	Present assessment method cover all the learning domains (knowledge, skill and attitude)	39.8
6.	Current assessment system meets the educational objectives	66.7
7.	The assessment method reliable(tests what it suppose to test) and valid(measures what it suppose to measure)?	66.1
8.	Internal assessment tests are helpful in improving student's performance	63.4
9.	Present curriculum fulfills its objective of producing quality doctors	57.9
10.	Integrated teaching should be part of the curriculum to produce more competent clinicians	81
11.	The curriculum is well structured	69.7
12.	The curriculum content and structure, and the student evaluation system, adequately include the use of competencies	45.2
13.	The present curriculum is student centered	31.1

**Graph – Teachers feedback on curriculum**



## 1.5 Parents feedback N= 42

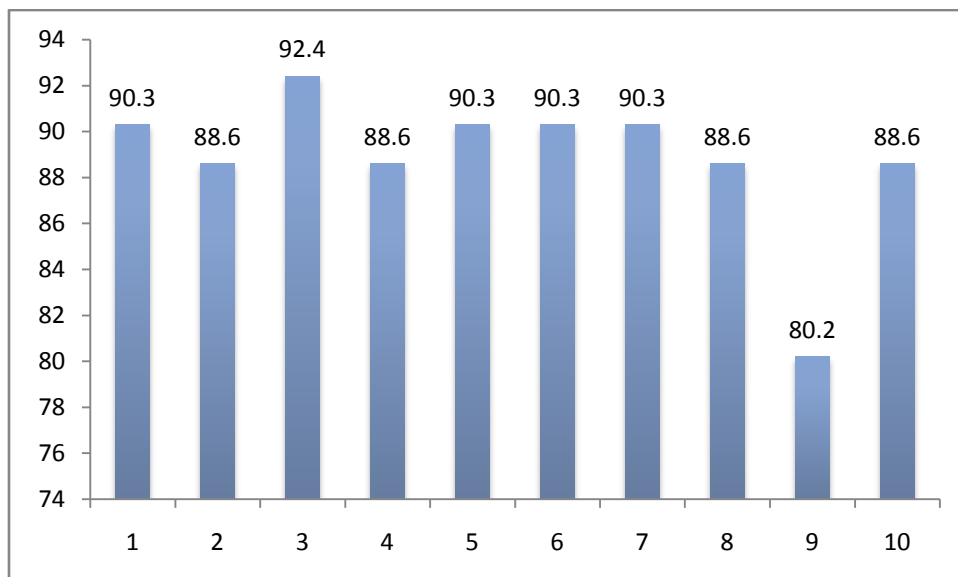
Category	Content	Score	Percentage of attainment
1	How do you rate overall quality and relevance of the program that your ward is undergoing/ has undergone at our Institution?	4.2	84.9
2	How well organized was the course (MBBS/MD/MS/BSc/MSc/PhD) ?	4.1	82.1
3	How would you rate the quality of teaching in the Institution?	4.2	84.3
4	The teaching and learning methods followed meets the requirements of the student.	4.1	81.4
5	Are you satisfied with the content of the your wards educational program in terms of		
	a) acquisition of basic science knowledge	4.1	81.2
	b) clinical/practical knowledge and skill	4.2	82.3
	c) community health perspective	4	80.2
	d) behavioral perspectives	4	80.2
6	How satisfied are you with the availability of resources for teaching at this college?	4.1	82.1
7	The utility of technology in teaching and learning at the Institution is adequate	4	80.5
8	Satisfaction level regarding assessment methods and instruments adopted by the Institution	4.2	84.5
9	How do you rate the outcome that your ward has achieved or would achieve from the course	4.2	84.5
10	How do you rate overall involvement of the Institution for Effective Delivery of the academic programs?	4.1	82.2



## 1.6 Employer feedback N= 20

SECTION	CONTENT	Score	% ATTAINMENT
1	Possesses strong theoretical knowledge	4.4	90.3
2	Demonstrates adequate clinical skills	4.3	88.6
3	Punctual in duties	4.5	92.4
4	Communication and inter personal skills are adequate	4.3	88.6
5	Function effectively individually and in a team, including diverse and multidisciplinary, to accomplish a task.	4.4	90.3
6	Aware of ethical and professional responsibilities	4.4	90.3
7	Have strong motivation to pursue life-long learning	4.4	90.3
8	Understands institutional vision and mission and works hard to contribute towards achieving them	4.3	88.6
9	Posses basic knowledge of data collection and interpretation	4.0	80.2
10	Updates his knowledge and skills towards patient care	4.3	88.6

**Graph - Employer feedback**



## **2. Year 2013-14**

### **Index**

<b>2.1</b>	<b>Student feedback on teachers</b>
<b>2.2</b>	<b>Graduating students feedback</b>
<b>2.3</b>	<b>Alumni feedback</b>
<b>2.4</b>	<b>Teachers feedback on curriculum</b>
<b>2.5</b>	<b>Parent's feedback</b>
<b>2.6</b>	<b>Employer feedback</b>

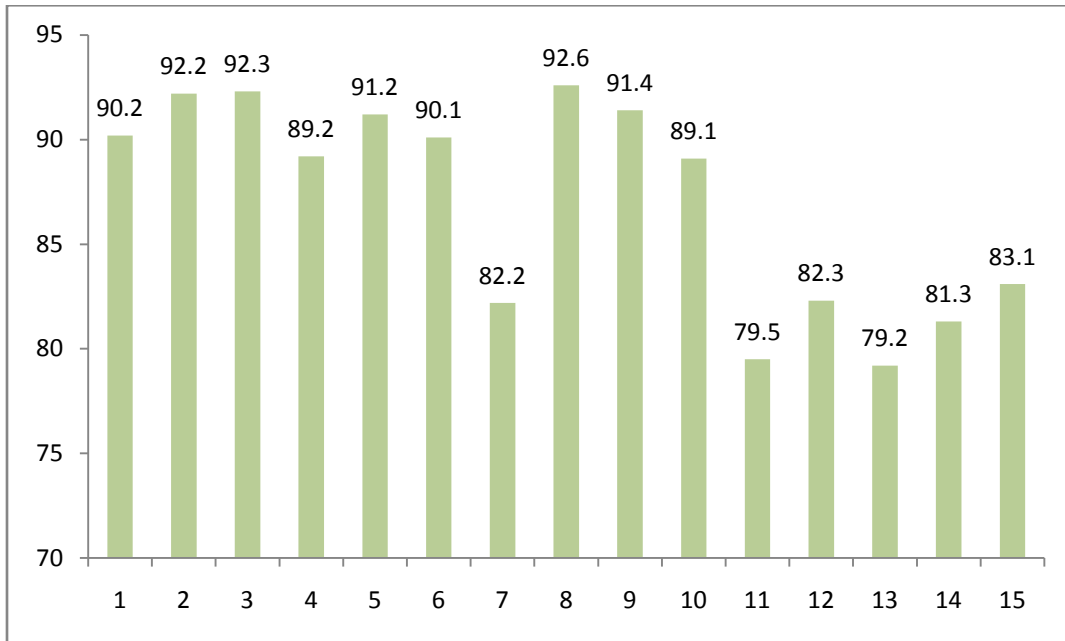
**Table 2.1 Student feedback on teachers**

SI No	Department	Average Score
1.	Anatomy	4.4
2.	Physiology	4.2
3.	Biochemistry	4.7
4.	Pathology	4.2
5.	Microbiology	4.1
6.	Pharmacology	4.3
7.	Forensic Medicine	4.8
8.	Community Medicine	4.4
9.	ENT	4.3
10.	Ophthalmology	3.9
11.	General Medicine	4.4
12.	General Surgery	4.1
13.	Pediatrics	4.6
14.	OBG	4.3
15.	Pulmonology	3.8
16.	Orthopedics	4
17.	Psychiatry	4
18.	Anesthesia	3.9
19.	Radio-diagnosis	3.9
20.	Dermatology	4.3

## 2.2 Graduating student Feedback N =75

Section	Criteria	Score	% of attainment
1	Curriculum of the course was well organized	4.3	90.2
2	Learning objectives of the course were explained to you at the beginning of the course	4.3	92.2
3	Teaching learning activities were sufficiently planned and executed well	4.6	92.3
4	Learning resources (clinical materials, books, journals, E-materials) were sufficient at Department level	4	89.2
5	College library was a good learning centre	4.3	91.2
6	Regular assessments were conducted during the course (Theory, practical, clinical, seminar, project work)	4.2	90.1
7	Adequate support was provided to present your work in conferences, seminars etc.	3.5	82.2
8	Examinations conducted are meticulous and transparent	4.5	92.6
9	Institution provided adequate support for my career advancement in future	4.3	91.4
10	There was adequate opportunity to seek feedback from seniors faculty	4.2	89.1
11	Hostel/accommodation facilities were satisfactory	3.6	79.5
12	Sports facilities for adequate	3.8	82.3
13	There were enough opportunities to showcase your talent in cultural events	3.9	79.2
14	There was grievance readdressal mechanism to address your concerns	4	81.3
15	The institution has brought in comprehensive improvement in you over the years.	4	83.1

**Graph – Graduating student feedback**

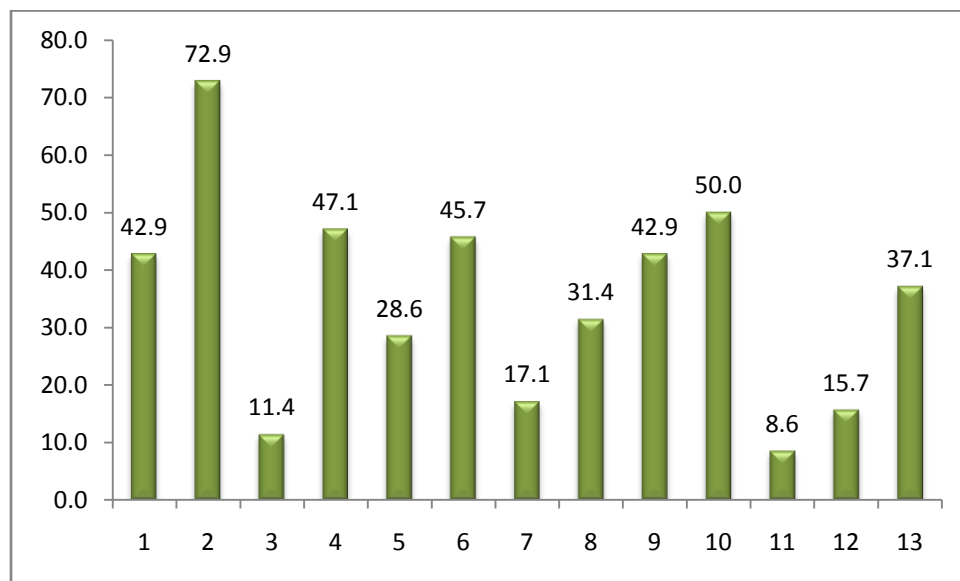


## 2.3 Alumni feedback

What are the things that you would appreciate most about this institute? N = 70

Section	Category	Number	Percentage
1.	Infrastructure	30	42.9
2.	Teaching Faculty	51	72.9
3.	Hostel Facilities	8	11.4
4.	Clinical Material	33	47.1
5.	Laboratories	20	28.6
6.	Teaching Learning Process	32	45.7
7.	Indoor & Outdoor Sports Facilities	12	17.1
8.	Cultural Activities	22	31.4
9.	Learning and Library Resources	30	42.9
10.	Greenery in Campus	35	50.0
11.	Communication	6	8.6
12.	Transport Facility	11	15.7
13.	Security	26	37.1

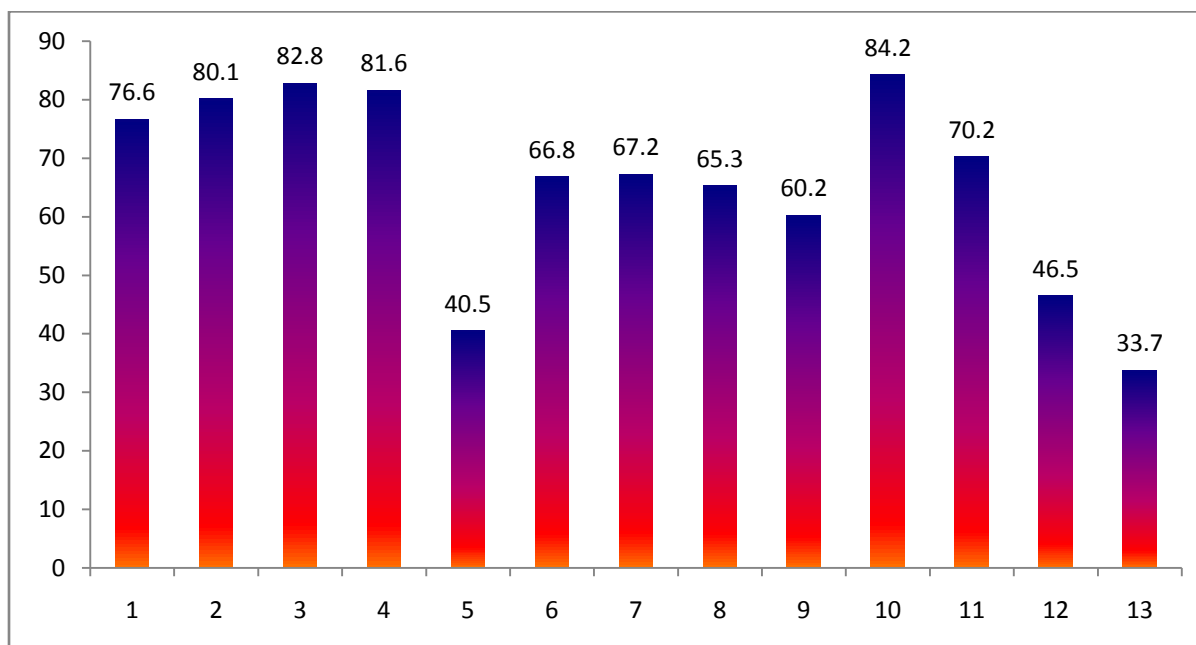
Graph – Alumni feedback



## 2.4 Teacher's feedback on Curriculum N= 136

Section	Content	Percentage attainment
1	The syllabus of the subject is adequate	76.6
2	The syllabus of your subject meets the learning objectives	80.1
3	Number of hours allotted to lecture class is adequate	82.8
4	Number of hours allotted to practical/clinical classes are adequate	81.6
5	Present assessment method cover all the learning domains (knowledge, skill and attitude)	40.5
6	Current assessment system meets the educational objectives	66.8
7	The assessment method reliable(tests what it suppose to test) and valid(measures what it suppose to measure)?	67.2
8	Internal assessment tests are helpful in improving student's performance	65.3
9	Present curriculum fulfills its objective of producing quality doctors	60.2
10	Integrated teaching should be part of the curriculum to produce more competent clinicians	84.2
11	The curriculum is well structured	70.2
12	The curriculum content and structure, and the student evaluation system, adequately include the use of competencies	46.5
13	The present curriculum is student centered	33.7

**Graph – Teachers feedback on curriculum**



## 2.5 Parents feedback N= 51

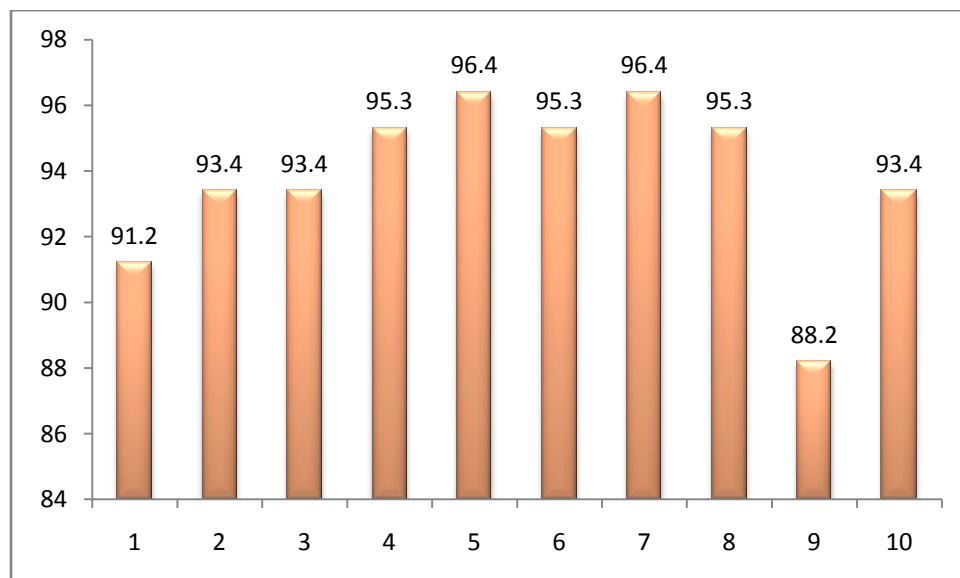
Section	Content	Score	Percentage of attainment
1	How do you rate overall quality and relevance of the program that your ward is undergoing/ has undergone at our Institution?	4.3	90.2
2	How well organized was the course (MBBS/MD/MS/BSc/MSc/PhD) ?	4.3	90.2
3	How would you rate the quality of teaching in the Institution?	4.5	85.5
4	The teaching and learning methods followed meets the requirements of the student.	4.3	82.4
5	Are you satisfied with the content of the your wards educational program in terms of		
	a) acquisition of basic science knowledge	4.2	82.4
	b) clinical/practical knowledge and skill	4.3	85.4
	c) community health perspective	4.2	82.4
	d) behavioral perspectives	4.1	80.2
6	How satisfied are you with the availability of resources for teaching at this college?	4.1	80.2
7	The utility of technology in teaching and learning at the Institution is adequate	4.1	80.2
8	Satisfaction level regarding assessment methods and instruments adopted by the Institution	4.2	84.5
9	How do you rate the outcome that your ward has achieved or would achieve from the course	4.3	86.8
10	How do you rate overall involvement of the Institution for Effective Delivery of the academic programs?	4.3	87.2



## 2.6 Employer feedback N= 18

SECTION	CONTENT	Score	% ATTAINMENT
1	Possesses strong theoretical knowledge	4.2	91.2
2	Demonstrates adequate clinical skills	4.3	93.4
3	Punctual in duties	4.3	93.4
4	Communication and inter personal skills are adequate	4.4	95.3
5	Function effectively individually and in a team, including diverse and multidisciplinary, to accomplish a task.	4.5	96.4
6	Aware of ethical and professional responsibilities	4.4	95.3
7	Have strong motivation to pursue life-long learning	4.5	96.4
8	Understands institutional vision and mission and works hard to contribute towards achieving them	4.4	95.3
9	Posses basic knowledge of data collection and interpretation	4.1	88.2
10	Updates his knowledge and skills towards patient care	4.3	93.4

**Graph - Employer feedback**



## **3. Year 2014-15**

### **Index**

<b>3.1</b>	<b>Student feedback on teachers</b>
<b>3.2</b>	<b>Graduating students feedback</b>
<b>3.3</b>	<b>Alumni feedback</b>
<b>3.4</b>	<b>Teachers feedback on curriculum</b>
<b>3.5</b>	<b>Parent's feedback</b>
<b>3.6</b>	<b>Employer feedback</b>

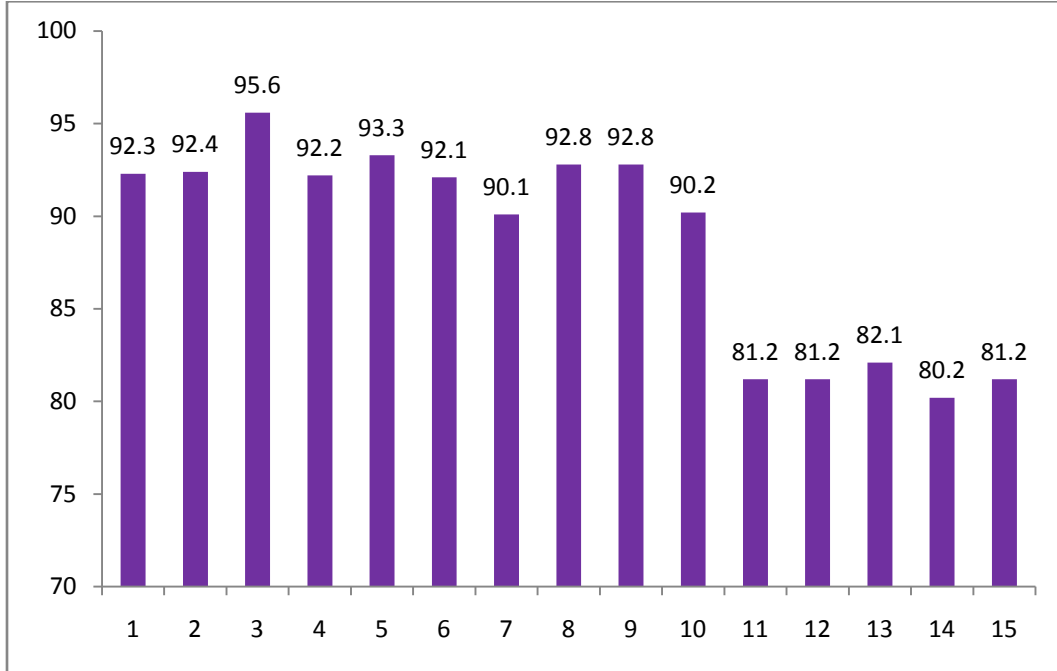
**Table 3.1 Student feedback on teachers**

Sl No	Department	Average Score
1.	Anatomy	4.7
2.	Physiology	4.2
3.	Biochemistry	4.7
4.	Pathology	4.4
5.	Microbiology	4
6.	Pharmacology	4.4
7.	Forensic Medicine	4.8
8.	Community Medicine	4.7
9.	ENT	4.4
10.	Ophthalmology	4.2
11.	General Medicine	4.6
12.	General Surgery	4.3
13.	Pediatrics	4.6
14.	OBG	4.4
15.	Pulmonology	4
16.	Orthopedics	4.2
17.	Psychiatry	4.1
18.	Anesthesia	4
19.	Radio-diagnosis	4
20.	Dermatology	4.5

## 3.2 Graduating student Feedback N =83

Section	Criteria	Score	% of attainment
1	Curriculum of the course was well organized	4.3	92.3
2	Learning objectives of the course were explained to you at the beginning of the course	4.4	92.4
3	Teaching learning activities were sufficiently planned and executed well	4.7	95.6
4	Learning resources (clinical materials, books, journals, E-materials) were sufficient at Department level	4.3	92.2
5	College library was a good learning centre	4.4	93.3
6	Regular assessments were conducted during the course (Theory, practical, clinical, seminar, project work)	4.4	92.1
7	Adequate support was provided to present your work in conferences, seminars etc.	4.3	90.1
8	Examinations conducted are meticulous and transparent	4.5	92.8
9	Institution provided adequate support for my career advancement in future	4.5	92.8
10	There was adequate opportunity to seek feedback from seniors faculty	4.4	90.2
11	Hostel/accommodation facilities were satisfactory	4	81.2
12	Sports facilities for adequate	4	81.2
13	There were enough opportunities to showcase your talent in cultural events	4.2	82.1
14	There was grievance readdressal mechanism to address your concerns	4.1	80.2
15	The institution has brought in comprehensive improvement in you over the years.	4	81.2

**Graph – Graduating student feedback**

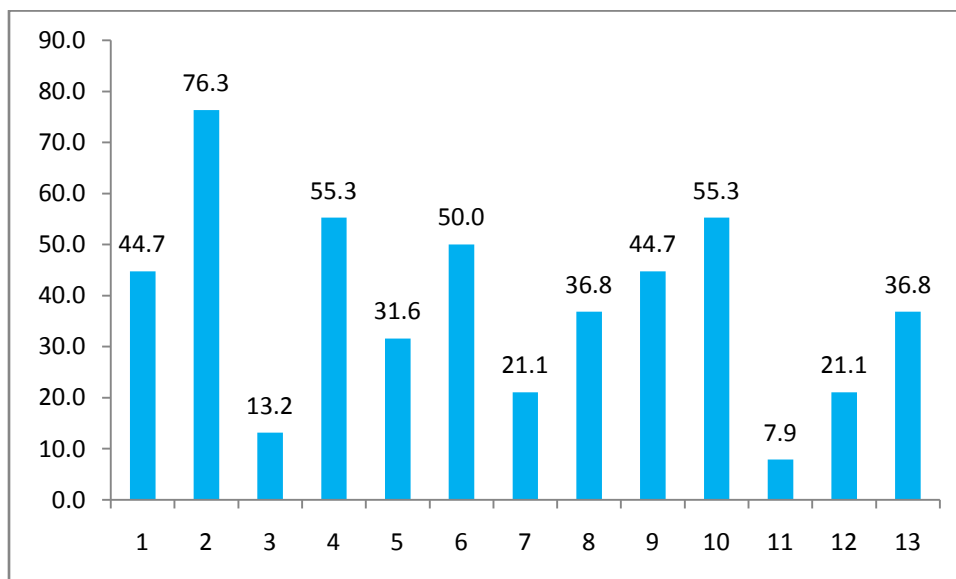


### 3.3 Alumni feedback

What are the things that you would appreciate most about this institute? N = 76

SL No	Criteria	Number	Percentage
1.	Infrastructure	34	44.7
2.	Teaching Faculty	58	76.3
3.	Hostel Facilities	10	13.2
4.	Clinical Material	42	55.3
5.	Laboratories	24	31.6
6.	Teaching Learning Process	38	50.0
7.	Indoor & Outdoor Sports Facilities	16	21.1
8.	Cultural Activities	28	36.8
9.	Learning and Library Resources	34	44.7
10.	Greenery in Campus	42	55.3
11.	Communication	6	7.9
12.	Transport Facility	16	21.1
13.	Security	28	36.8

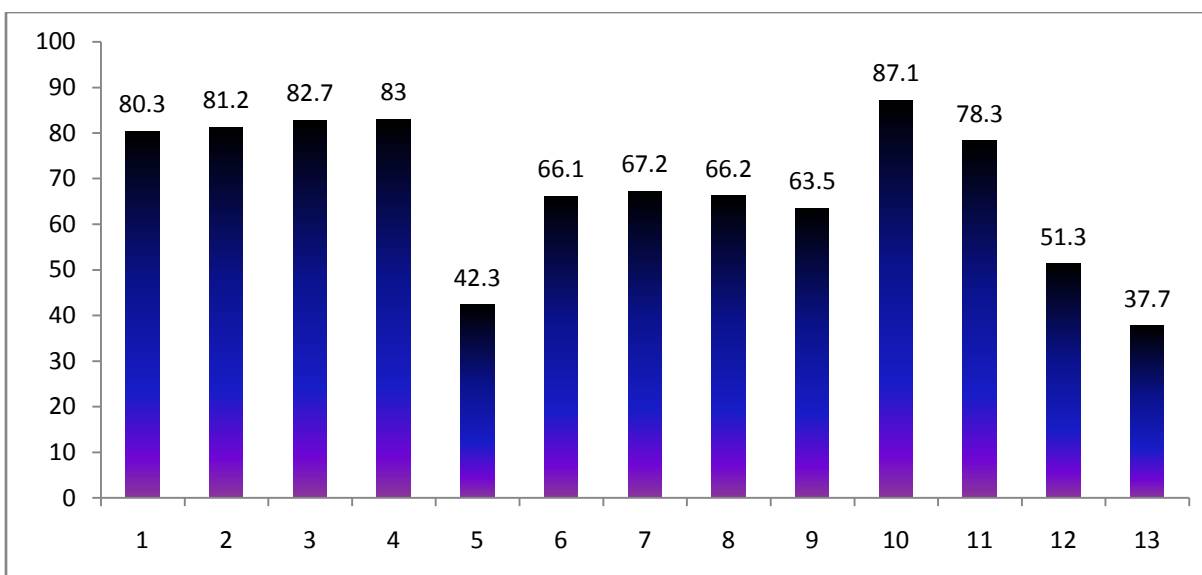
Graph – Alumni feedback



### 3.4 Teacher's feedback on Curriculum N= 165

Section	Content	Percentage attainment
1	The syllabus of the subject is adequate	80.3
2	The syllabus of your subject meets the learning objectives	81.2
3	Number of hours allotted to lecture class is adequate	82.7
4	Number of hours allotted to practical/clinical classes are adequate	83
5	Present assessment method cover all the learning domains (knowledge, skill and attitude)	42.3
6	Current assessment system meets the educational objectives	66.1
7	The assessment method reliable(tests what it suppose to test) and valid(measures what it suppose to measure)?	67.2
8	Internal assessment tests are helpful in improving student's performance	66.2
9	Present curriculum fulfills its objective of producing quality doctors	63.5
10	Integrated teaching should be part of the curriculum to produce more competent clinicians	87.1
11	The curriculum is well structured	78.3
12	The curriculum content and structure, and the student evaluation system, adequately include the use of competencies	51.3
13	The present curriculum is student centered	37.7

**Graph – Teachers feedback on curriculum**



### 3.5 Parents feedback N= 54

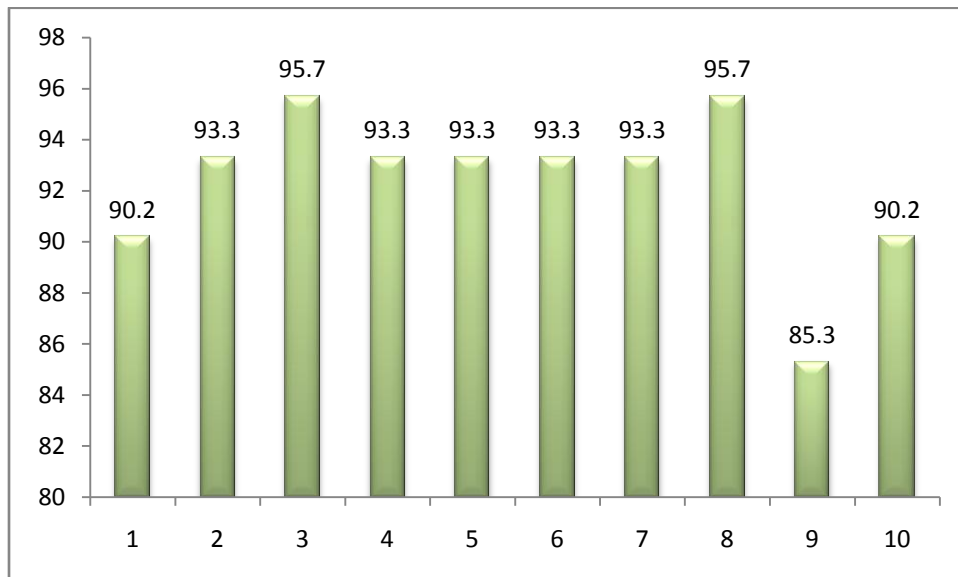
Category	Content	Score	Percentage of attainment
1	How do you rate overall quality and relevance of the program that your ward is undergoing/ has undergone at our Institution?	4.3	90.5
2	How well organized was the course (MBBS/MD/MS/BSc/MSc/PhD) ?	4.4	93.2
3	How would you rate the quality of teaching in the Institution?	4.5	87.7
4	The teaching and learning methods followed meets the requirements of the student.	4.5	87.7
5	Are you satisfied with the content of the your wards educational program in terms of		
	a) acquisition of basic science knowledge	4.3	86.2
	b) clinical/practical knowledge and skill	4.4	89.3
	c) community health perspective	4.3	86.2
	d) behavioral perspectives	4.3	86.2
6	How satisfied are you with the availability of resources for teaching at this college?	4.5	87.7
7	The utility of technology in teaching and learning at the Institution is adequate	4.6	90.4
8	Satisfaction level regarding assessment methods and instruments adopted by the Institution	4.6	90.6
9	How do you rate the outcome that your ward has achieved or would achieve from the course	4.6	90.6
10	How do you rate overall involvement of the Institution for Effective Delivery of the academic programs?	4.5	87.7



### 3.6 Employer feedback N= 18

SECTION	CONTENT	Score	% ATTAINMENT
1	Possesses strong theoretical knowledge	4.3	90.2
2	Demonstrates adequate clinical skills	4.4	93.3
3	Punctual in duties	4.5	95.7
4	Communication and inter personal skills are adequate	4.4	93.3
5	Function effectively individually and in a team, including diverse and multidisciplinary, to accomplish a task.	4.4	93.3
6	Aware of ethical and professional responsibilities	4.4	93.3
7	Have strong motivation to pursue life-long learning	4.4	93.3
8	Understands institutional vision and mission and works hard to contribute towards achieving them	4.5	95.7
9	Posses basic knowledge of data collection and interpretation	4.0	85.3
10	Updates his knowledge and skills towards patient care	4.3	90.2

**Graph - Employer feedback**



## **4. Year 2015-16**

### **Index**

<b>4.1</b>	<b>Student feedback on teachers</b>
<b>4.2</b>	<b>Graduating students feedback</b>
<b>4.3</b>	<b>Alumni feedback</b>
<b>4.4</b>	<b>Teachers feedback on curriculum</b>
<b>4.5</b>	<b>Parent's feedback</b>
<b>4.6</b>	<b>Employer feedback</b>

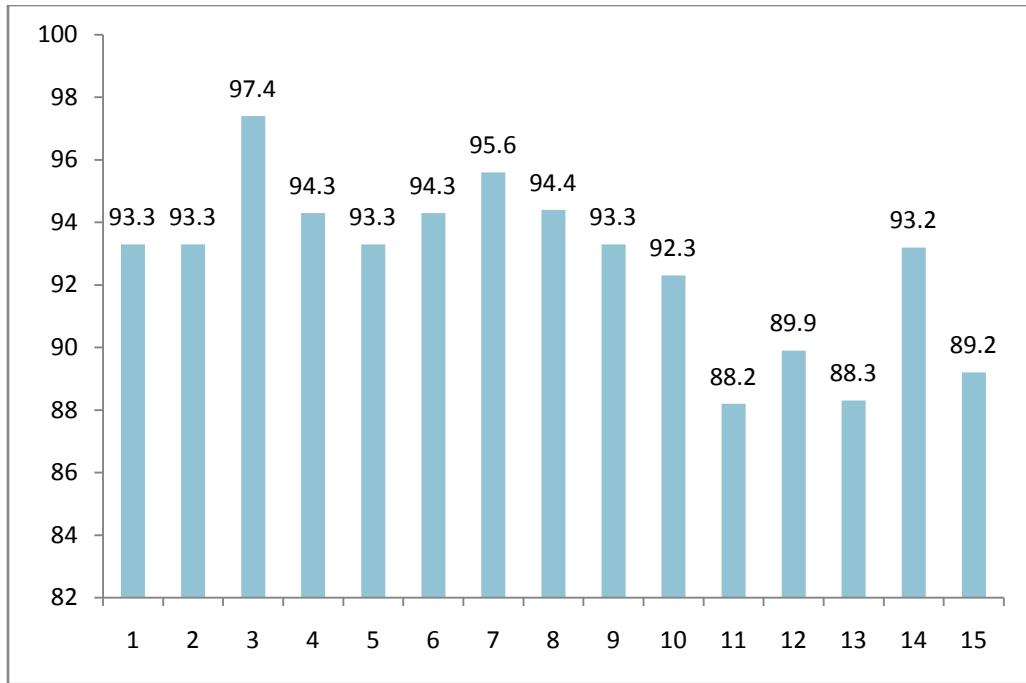
**Table 4.1 Student feedback on teachers**

SI No	Department	Average Score
1.	Anatomy	4.7
2.	Physiology	4.4
3.	Biochemistry	4.7
4.	Pathology	4.5
5.	Microbiology	4.3
6.	Pharmacology	4.4
7.	Forensic Medicine	4.7
8.	Community Medicine	4.7
9.	ENT	4.4
10.	Ophthalmology	4.4
11.	General Medicine	4.7
12.	General Surgery	4.5
13.	Pediatrics	4.7
14.	OBG	4.5
15.	Pulmonology	4.1
16.	Orthopedics	4.2
17.	Psychiatry	4.1
18.	Anesthesia	4.2
19.	Radio-diagnosis	4.3
20.	Dermatology	4.6

## 4.2 Graduating student Feedback N =88

Section	Criteria	Score	% of attainment
1	Curriculum of the course was well organized	4.4	93.3
2	Learning objectives of the course were explained to you at the beginning of the course	4.4	93.3
3	Teaching learning activities were sufficiently planned and executed well	4.7	97.4
4	Learning resources (clinical materials, books, journals, E-materials) were sufficient at Department level	4.5	94.3
5	College library was a good learning centre	4.4	93.3
6	Regular assessments were conducted during the course (Theory, practical, clinical, seminar, project work)	4.5	94.3
7	Adequate support was provided to present your work in conferences, seminars etc.	4.7	95.6
8	Examinations conducted are meticulous and transparent	4.5	94.4
9	Institution provided adequate support for my career advancement in future	4.6	93.3
10	There was adequate opportunity to seek feedback from seniors faculty	4.6	92.3
11	Hostel/accommodation facilities were satisfactory	4.2	88.2
12	Sports facilities for adequate	4.3	89.9
13	There were enough opportunities to showcase your talent in cultural events	4.3	88.3
14	There was grievance readdressal mechanism to address your concerns	4.5	93.2
15	The institution has brought in comprehensive improvement in you over the years.	4.2	89.2

**Graph – Graduating student feedback**

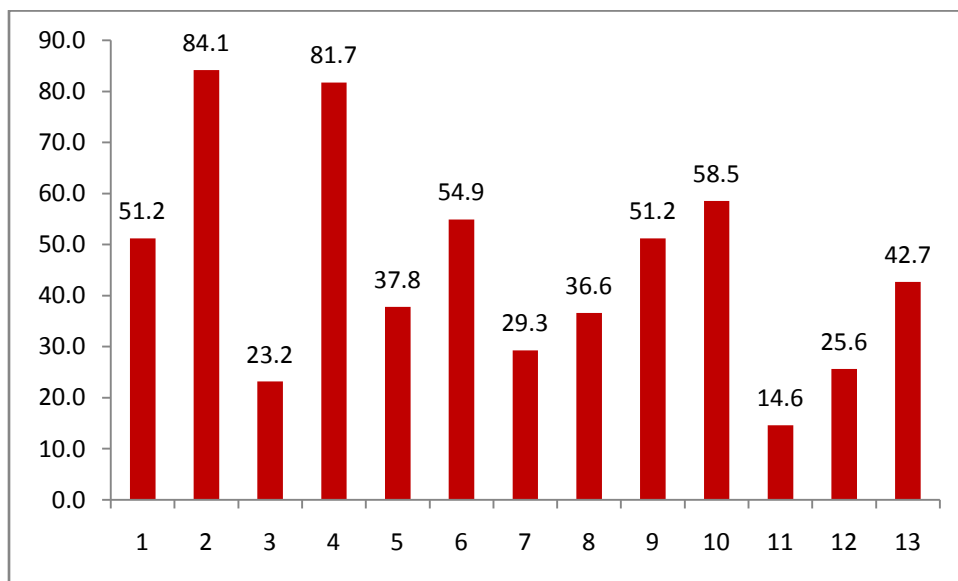


## 4.3 Alumni feedback

What are the things that you would appreciate most about this institute? N = 82

Criteria	Number	Percentage
Infrastructure	42	51.2
Teaching Faculty	69	84.1
Hostel Facilities	19	23.2
Clinical Material	67	81.7
Laboratories	31	37.8
Teaching Learning Process	45	54.9
Indoor & Outdoor Sports Facilities	24	29.3
Cultural Activities	30	36.6
Learning and Library Resources	42	51.2
Greenery in Campus	48	58.5
Communication	12	14.6
Transport Facility	21	25.6
Security	35	42.7

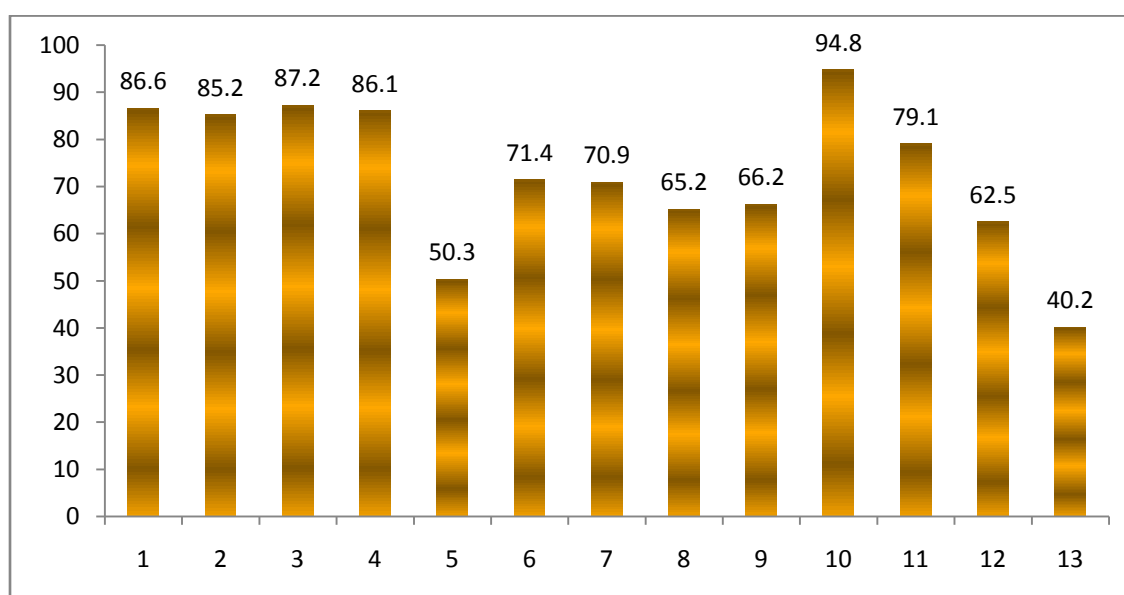
Graph – Alumni feedback



## 4.4 Teacher's feedback on Curriculum N= 189

Criteria	Content	Percentage attainment
1	The syllabus of the subject is adequate	86.6
2	The syllabus of your subject meets the learning objectives	85.2
3	Number of hours allotted to lecture class is adequate	87.2
4	Number of hours allotted to practical/clinical classes are adequate	86.1
5	Present assessment method cover all the learning domains (knowledge, skill and attitude)	50.3
6	Current assessment system meets the educational objectives	71.4
7	The assessment method reliable(tests what it suppose to test) and valid(measures what it suppose to measure)?	70.9
8	Internal assessment tests are helpful in improving student's performance	65.2
9	Present curriculum fulfills its objective of producing quality doctors	66.2
10	Integrated teaching should be part of the curriculum to produce more competent clinicians	94.8
11	The curriculum is well structured	79.1
12	The curriculum content and structure, and the student evaluation system, adequately include the use of competencies	62.5
13	The present curriculum is student centered	40.2

**Graph – Teachers feedback on curriculum**



## 4.5 Parents feedback N= 59

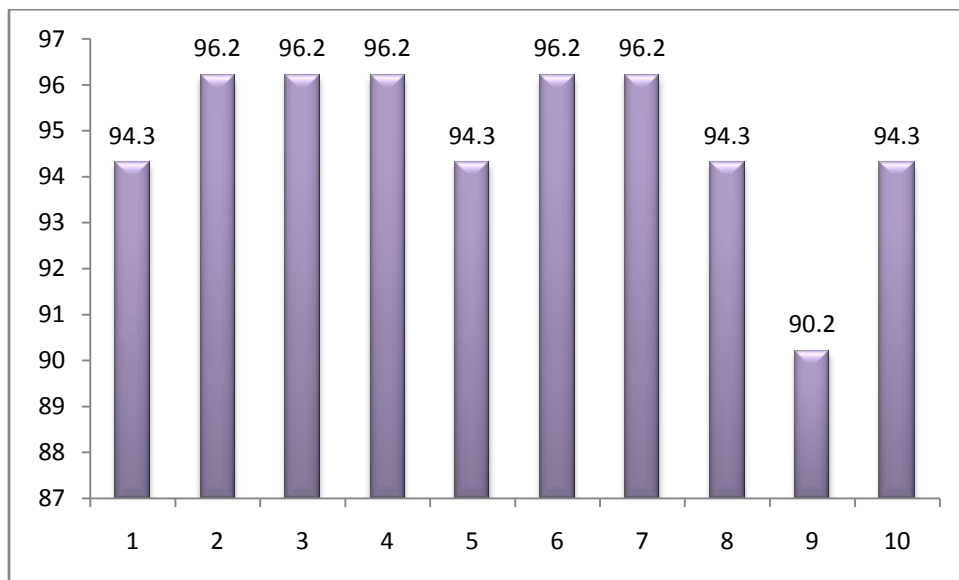
Category	Content	Score	Percentage of attainment
1	How do you rate overall quality and relevance of the program that your ward is undergoing/ has undergone at our Institution?	4.5	95.5
2	How well organized was the course (MBBS/MD/MS/BSc/MSc/PhD) ?	4.4	92.1
3	How would you rate the quality of teaching in the Institution?	4.7	96.5
4	The teaching and learning methods followed meets the requirements of the student.	4.6	95.5
5	Are you satisfied with the content of the your wards educational program in terms of		
	a) acquisition of basic science knowledge	4.4	92.1
	b) clinical/practical knowledge and skill	4.5	94.2
	c) community health perspective	4.3	86.2
	d) behavioral perspectives	4.3	86.2
6	How satisfied are you with the availability of resources for teaching at this college?	4.5	87.7
7	The utility of technology in teaching and learning at the Institution is adequate	4.6	95.5
8	Satisfaction level regarding assessment methods and instruments adopted by the Institution	4.6	95.5
9	How do you rate the outcome that your ward has achieved or would achieve from the course	4.6	95.5
10	How do you rate overall involvement of the Institution for Effective Delivery of the academic programs?	4.5	87.7



## 4.6 Employer feedback N= 22

SECTION	CONTENT	Score	% ATTAINMENT
1	Possesses strong theoretical knowledge	4.4	94.3
2	Demonstrates adequate clinical skills	4.5	96.2
3	Punctual in duties	4.5	96.2
4	Communication and inter personal skills are adequate	4.5	96.2
5	Function effectively individually and in a team, including diverse and multidisciplinary, to accomplish a task.	4.4	94.3
6	Aware of ethical and professional responsibilities	4.5	96.2
7	Have strong motivation to pursue life-long learning	4.5	96.2
8	Understands institutional vision and mission and works hard to contribute towards achieving them	4.4	94.3
9	Posses basic knowledge of data collection and interpretation	4.2	90.2
10	Updates his knowledge and skills towards patient care	4.4	94.3

**Graph - Employer feedback**



## **5. Year 2015-16**

### **Index**

<b>5.1</b>	<b>Student feedback on teachers</b>
<b>5.2</b>	<b>Graduating students feedback</b>
<b>5.3</b>	<b>Alumni feedback</b>
<b>5.4</b>	<b>Teachers feedback on curriculum</b>
<b>5.5</b>	<b>Parent's feedback</b>
<b>5.6</b>	<b>Employer feedback</b>

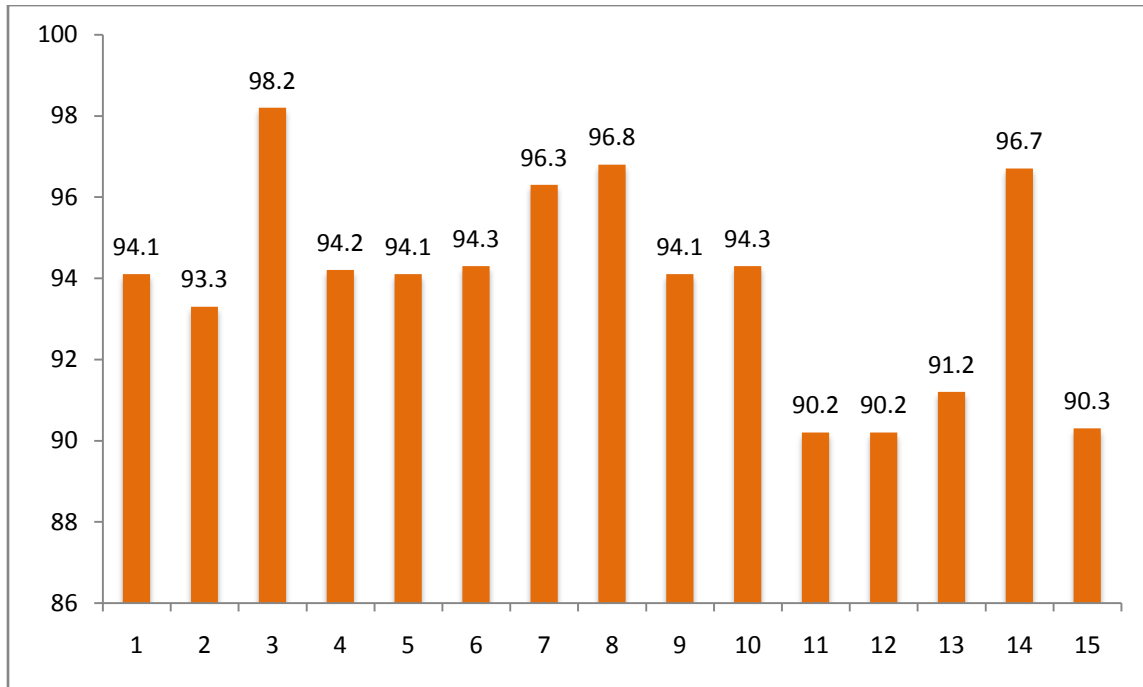
## 5.1 Student feedback on teachers

Sl No	Department	Average Score
1.	Anatomy	4.7
2.	Physiology	4.6
3.	Biochemistry	4.7
4.	Pathology	4.6
5.	Microbiology	4.4
6.	Pharmacology	4.6
7.	Forensic Medicine	4.7
8.	Community Medicine	4.7
9.	ENT	4.5
10.	Ophthalmology	4.4
11.	General Medicine	4.7
12.	General Surgery	4.5
13.	Pediatrics	4.7
14.	OBG	4.5
15.	Pulmonology	4.2
16.	Orthopedics	4.2
17.	Psychiatry	4.3
18.	Anesthesia	4.2
19.	Radio-diagnosis	4.3
20.	Dermatology	4.6
21.	Emergency Medicine	4.1

## 5.2 Graduating student Feedback N =94

Section	Criteria	Score	% of attainment
1	Curriculum of the course was well organized	4.5	94.1
2	Learning objectives of the course were explained to you at the beginning of the course	4.4	93.3
3	Teaching learning activities were sufficiently planned and executed well	4.8	98.2
4	Learning resources (clinical materials, books, journals, E- materials) were sufficient at Department level	4.6	94.2
5	College library was a good learning centre	4.5	94.1
6	Regular assessments were conducted during the course (Theory, practical, clinical, seminar, project work)	4.6	94.3
7	Adequate support was provided to present your work in conferences, seminars etc.	4.7	96.3
8	Examinations conducted are meticulous and transparent	4.7	96.8
9	Institution provided adequate support for my career advancement in future	4.6	94.1
10	There was adequate opportunity to seek feedback from seniors faculty	4.7	94.3
11	Hostel/accommodation facilities were satisfactory	4.4	90.2
12	Sports facilities for adequate	4.4	90.2
13	There were enough opportunities to showcase your talent in cultural events	4.6	91.2
14	There was grievance readdressal mechanism to address your concerns	4.8	96.7
15	The institution has brought in comprehensive improvement in you over the years.	4.5	90.3

**Graph – Graduating student feedback**

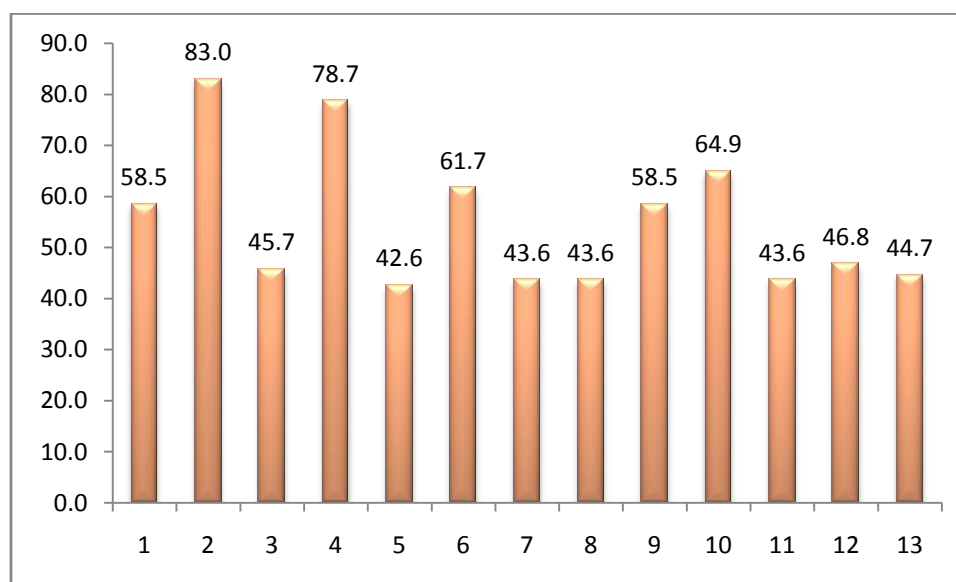


## 5.3 Alumni feedback

What are the things that you would appreciate most about this institute? N = 94

Section	Criteria	Number	Percentage
1.	Infrastructure	55	58.5
2.	Teaching Faculty	78	83.0
3.	Hostel Facilities	43	45.7
4.	Clinical Material	74	78.7
5.	Laboratories	40	42.6
6.	Teaching Learning Process	58	61.7
7.	Indoor & Outdoor Sports Facilities	41	43.6
8.	Cultural Activities	41	43.6
9.	Learning and Library Resources	55	58.5
10.	Greenery in Campus	61	64.9
11.	Communication	41	43.6
12.	Transport Facility	44	46.8
13.	Security	42	44.7

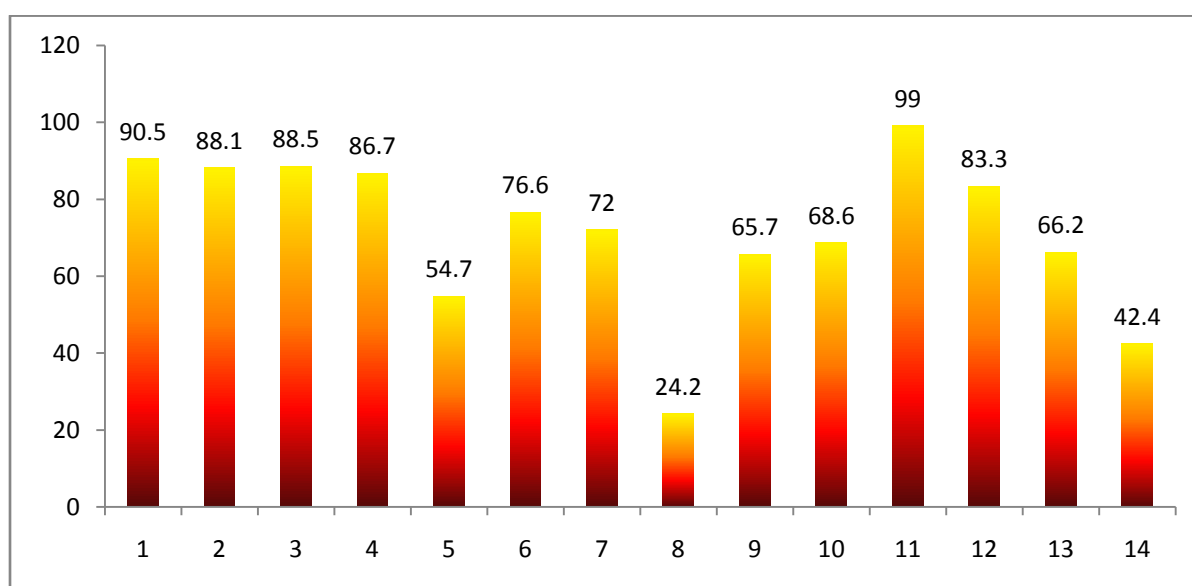
Graph – Alumni feedback



## 5.4 Teacher's feedback on Curriculum N= 192

Criteria	Content	Percentage attainment
1	The syllabus of the subject is adequate	90.5
2	The syllabus of your subject meets the learning objectives	88.1
3	Number of hours allotted to lecture class is adequate	88.5
4	Number of hours allotted to practical/clinical classes are adequate	86.7
5	Present assessment method cover all the learning domains (knowledge, skill and attitude)	54.7
6	Current assessment system meets the educational objectives	76.6
7	The assessment method reliable(tests what it suppose to test) and valid(measures what it suppose to measure)?	72
8	Have you shared your lectures or other reading material to students through JSSUONLINE portal?	24.2
9	Internal assessment tests are helpful in improving student's performance	65.7
10	Present curriculum fulfills its objective of producing quality doctors	68.6
11	Integrated teaching should be part of the curriculum to produce more competent clinicians	99
12	The curriculum is well structured	83.3
13	The curriculum content and structure, and the student evaluation system, adequately include the use of competencies	66.2
14	The present curriculum is student centered	42.4

**Graph – Teachers feedback on curriculum**



## 5.5 Parents feedback N= 61

Category	Content	Score	Percentage of attainment
1	How do you rate overall quality and relevance of the program that your ward is undergoing/ has undergone at our Institution?	4.6	95.7
2	How well organized was the course (MBBS/MD/MS/BSc/MSc/PhD) ?	4.6	95.7
3	How would you rate the quality of teaching in the Institution?	4.7	96.8
4	The teaching and learning methods followed meets the requirements of the student.	4.6	95.7
5	Are you satisfied with the content of the your wards educational program in terms of		
	a) acquisition of basic science knowledge	4.5	94.3
	b) clinical/practical knowledge and skill	4.5	94.3
	c) community health perspective	4.4	90.2
	d) behavioral perspectives	4.4	90.2
6	How satisfied are you with the availability of resources for teaching at this college?	4.5	94.3
7	The utility of technology in teaching and learning at the Institution is adequate	4.7	96.8
8	Satisfaction level regarding assessment methods and instruments adopted by the Institution	4.7	96.8
9	How do you rate the outcome that your ward has achieved or would achieve from the course	4.5	94.3
10	How do you rate overall involvement of the Institution for Effective Delivery of the academic programs?	4.5	94.3



## 5.6 Employer feedback N= 28

SECTION	CONTENT	Score	% ATTAINMENT
1	Possesses strong theoretical knowledge	4.4	94.4
2	Demonstrates adequate clinical skills	4.5	96.3
3	Punctual in duties	4.6	97.3
4	Communication and inter personal skills are adequate	4.6	97.3
5	Function effectively individually and in a team, including diverse and multidisciplinary, to accomplish a task.	4.5	96.3
6	Aware of ethical and professional responsibilities	4.4	94.4
7	Have strong motivation to pursue life-long learning	4.5	96.3
8	Understands institutional vision and mission and works hard to contribute towards achieving them	4.5	96.3
9	Posses basic knowledge of data collection and interpretation	4.5	96.3
10	Updates his knowledge and skills towards patient care	4.4	94.4

**Graph - Employer feedback**

